



BCM943602CDP

Modification instructions

Thanks for purchasing a 12+6 adapter please follow the instructions below to modify your BCM943602CDP, if you have any issues or questions please contact [Support](#) or check the [FAQ](#)

*****Please carefully read the [Compatibility Guide](#) before starting installation*****

Time

The modification of the card is will take at least 45mins.

Preparation

Make sure you have a clean well lit workspace and have taken the appropriate anti-static precautions. Please read the instructions carefully before proceeding.

You will need:

- A BCM94360CDP
- This guide

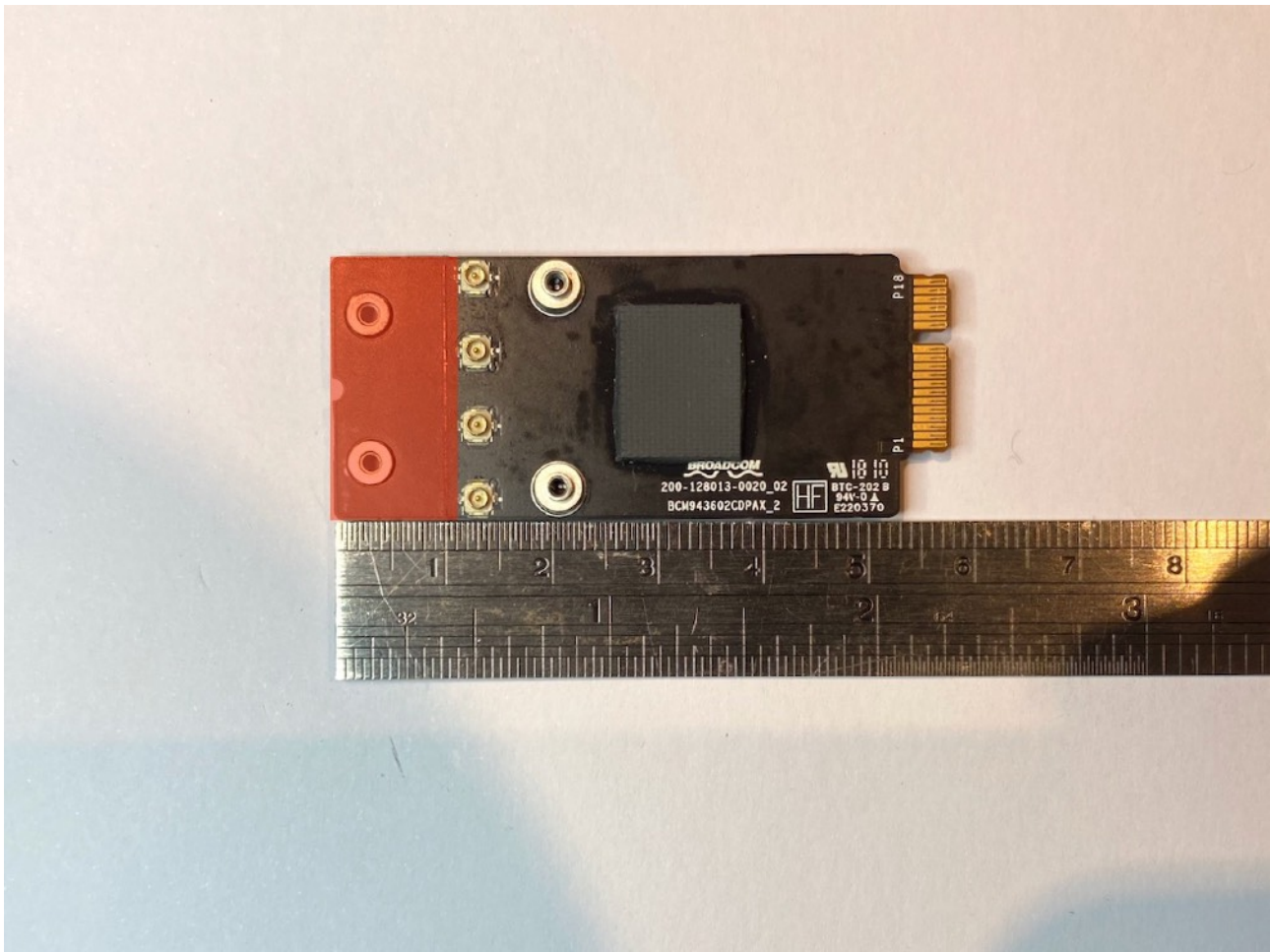
You will need the following tools:

- A very sharp knife (scalpel or Stanley knife)
- a small vice
- a set of jewellers files
- A small 10cm metal ruler
- callipers (optional)
- emery paper
- Dremel (optional)

*****It is always good practice to back up your data and make sure your machine has been shut down properly before you start any work. This is a DIY unsupported modification to your laptop that you are undertaking at your own risk and intriguing industries will take no responsibly for any damage or data loss*****

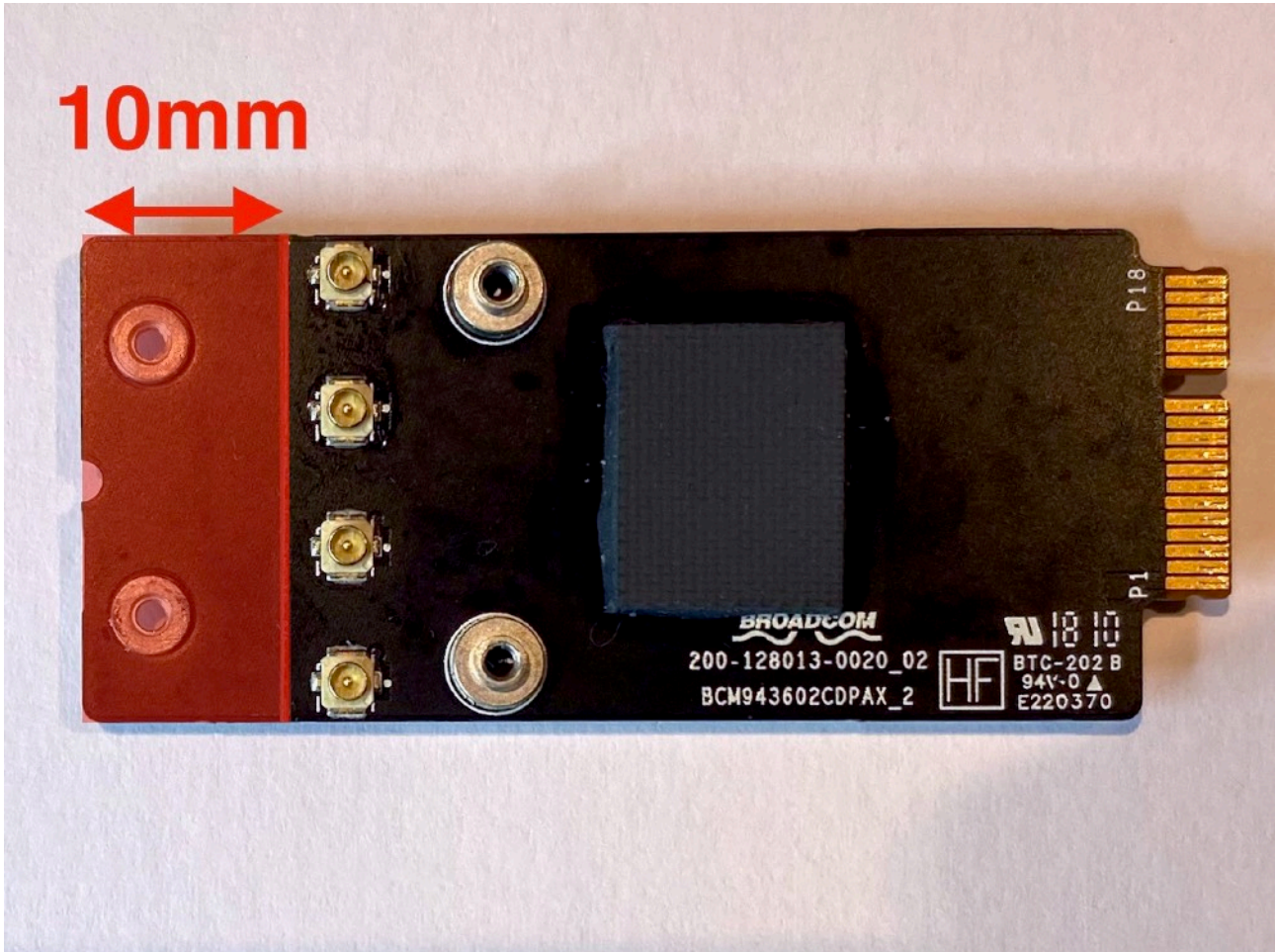
1. You will need to remove about 11mm from the WiFi Card

This part of the card is not need and is only used to secure the antenna connectors in an iMac. The finished card will want to be 46mm long.



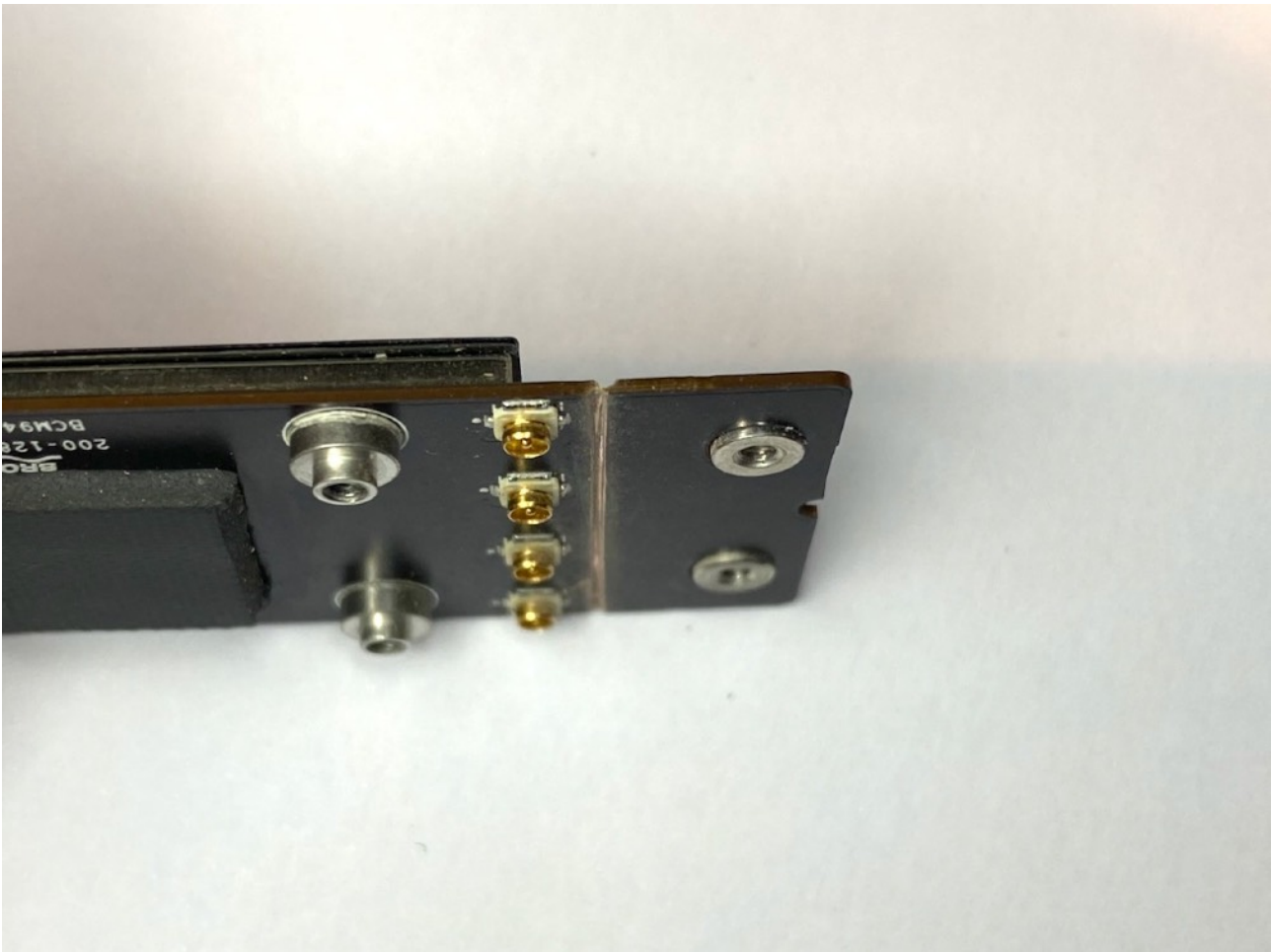
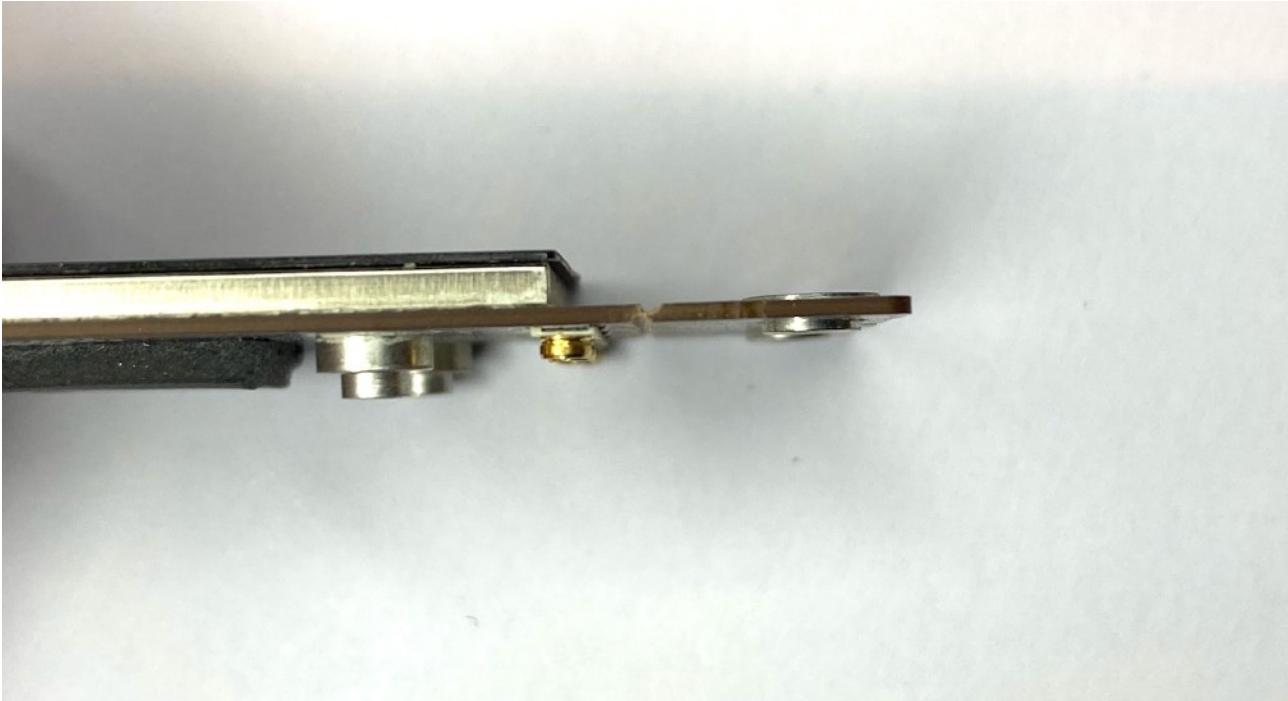
2. Mark the card where it is to be cut

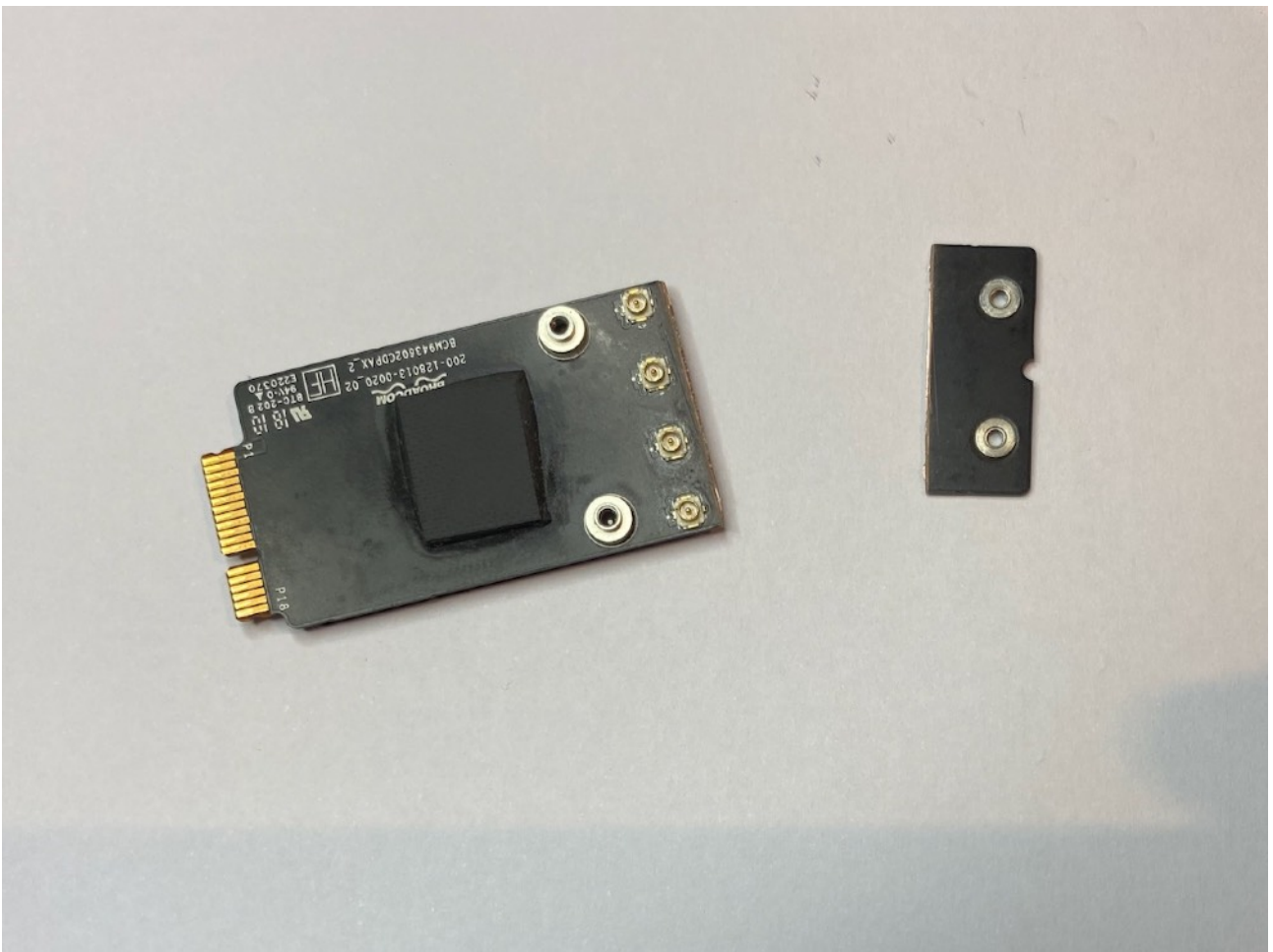
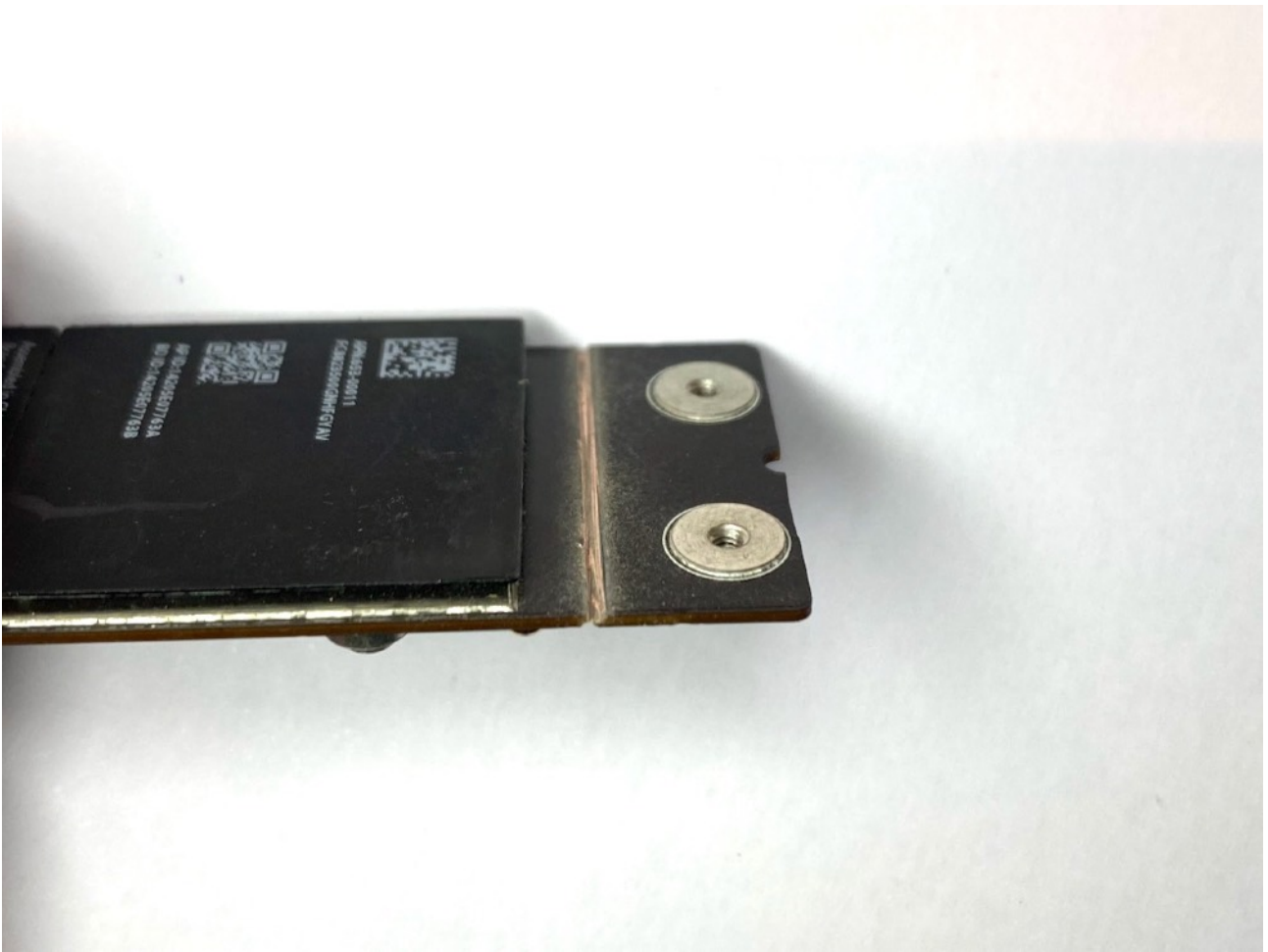
Measure and mark the card on both sides. Mark the card 10mm in from the end of the card. You will be removing the red shaded part, Put the card in a vice using the metal ruler as a straight edge , score along the ruler with a sharp knife until you have a groove that a triangular jewellers file will sit in, score the edges of the card and repeat on the other side.



3. Carefully cut the groove on both sides

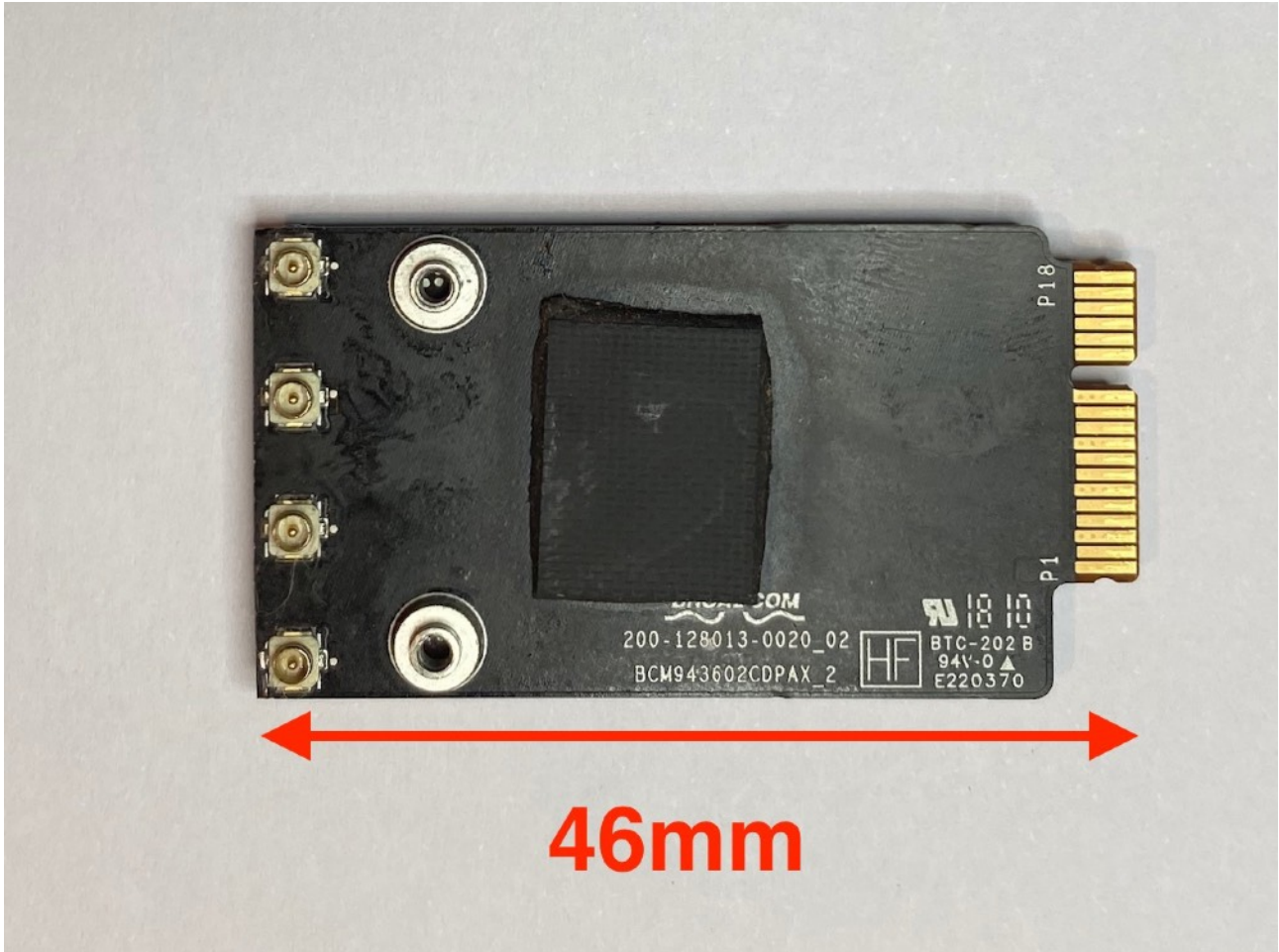
Using the file or a dermel carefully make the groove deeper switching between both sides regularly. Be very careful to not damage the antenna connectors, patience is key. When you are nearly through you should be able to snap the unneeded portion away.





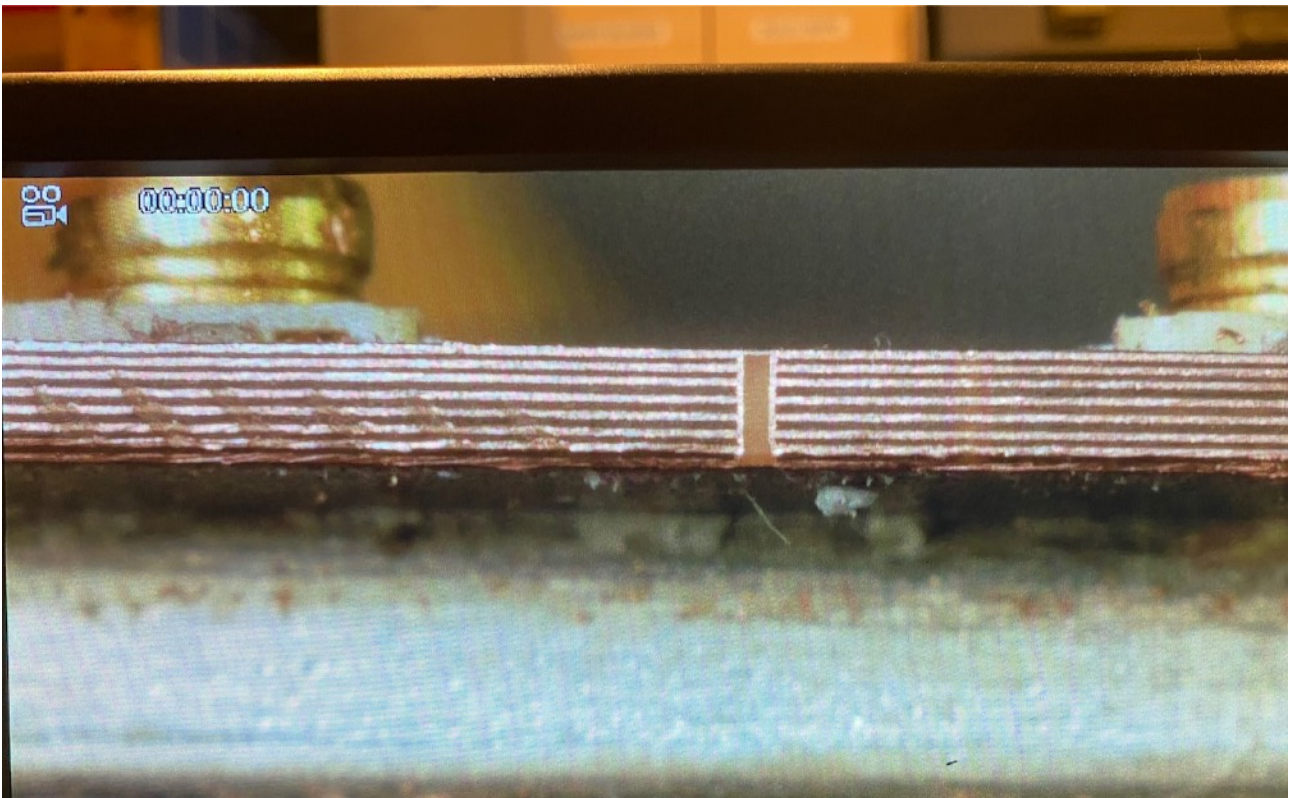
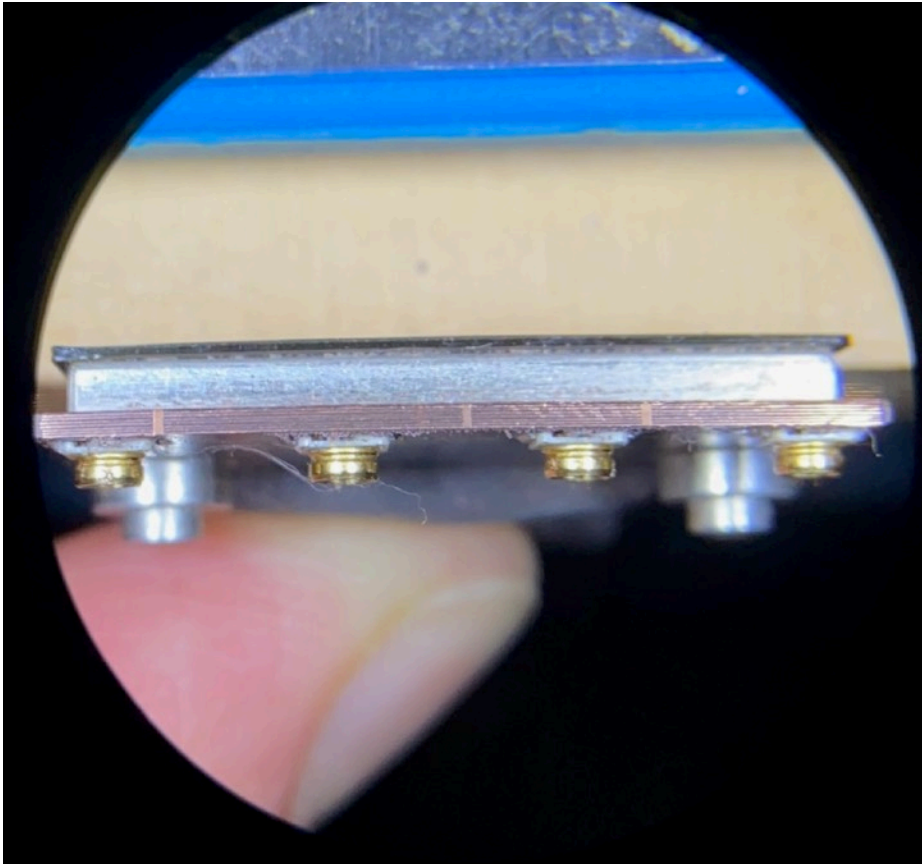
4. Remove the remaining 1mm of board and tidy the edge

Carefully file away the remains 1mm of board to make the card 46mm long, finish the edge with some emery paper.



Notes on installation

The card should be treated the same as a BCM94360CD, the exposed layers are all Ground plane and do not need to be treated specially.



BCM943602CDP Identification



Change Log

v1 - Initial version